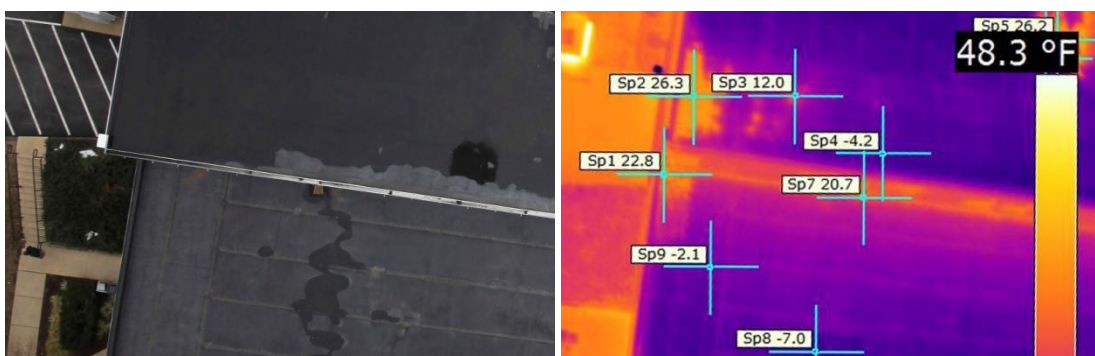
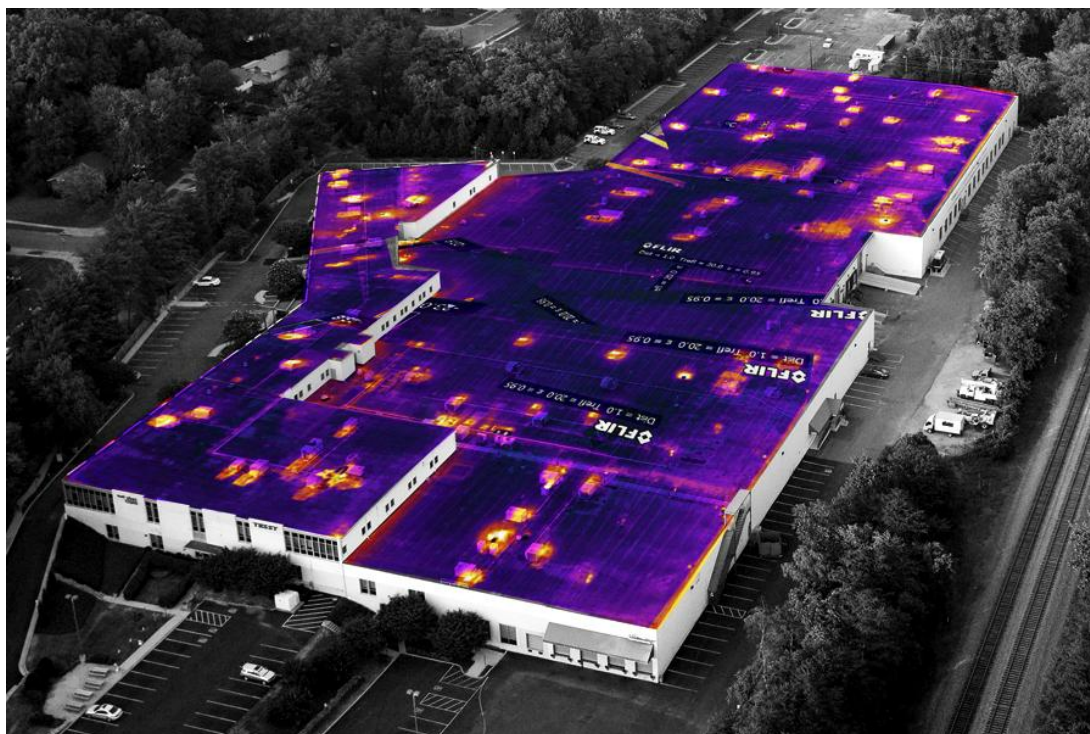


Aerial Thermal Imaging and Energy Audit Services



Using the highest commercially-available resolution Jenoptik's infrared camera, we can provide a unique aerial thermal view. The combination of low altitude flight and high resolution thermographic imagery provide a more detailed view than could be obtained by other aerial thermal imaging methods. DDIS will design and implement a custom IR capture strategy for each building envelope we analyze.

This is ideal for:

- Large-Scale Exterior Building Envelope (Rooftop and Facade) Inspection.
- Moisture and Heat-loss Detection.
 - Overheating Equipment
 - Environmental Inspection

Check out the dynamic presentation tool using Photosynth ► [Infrared building envelope Mapping](#)